

Health Service Supports

- ◆ Nursing staff oversee medical care
- ◆ Psychiatric nurse practitioner oversees psychiatric care
- ◆ Community medical providers
(Must have private health insurance if out of state)

Funding Sources

- ◆ School District/State/Private

Licenses

- ◆ MA Department of Elementary and Secondary Education (DESE)
- ◆ MA Department of Early Education and Care (EEC)

Approvals

- ◆ Formally approved by California, District of Columbia, Illinois, Massachusetts, Maryland, New York.
(Ask Admissions for information about your state).
- ◆ Rolling admissions policy; student enrollment throughout the year.
- ◆ SEVIS approved, allowing Latham to provide I-20 Visas to international students.

Adult Services

- ◆ After completion of studies at Latham, some students transition into our Adult Services Program (including supported community living).

Accreditation

- ◆ Council on Accreditation (COA)

Affiliations

- ◆ maaps, NATSAP, CEC, ADDP, AACRC, PWSA(USA), PWSA NE, FPWR, PWS Alliance NY



Latham's Admissions Team works closely with families considering residential placement. To schedule a tour and learn more about the admissions process, email or call:

admissions@lathamcenters.org

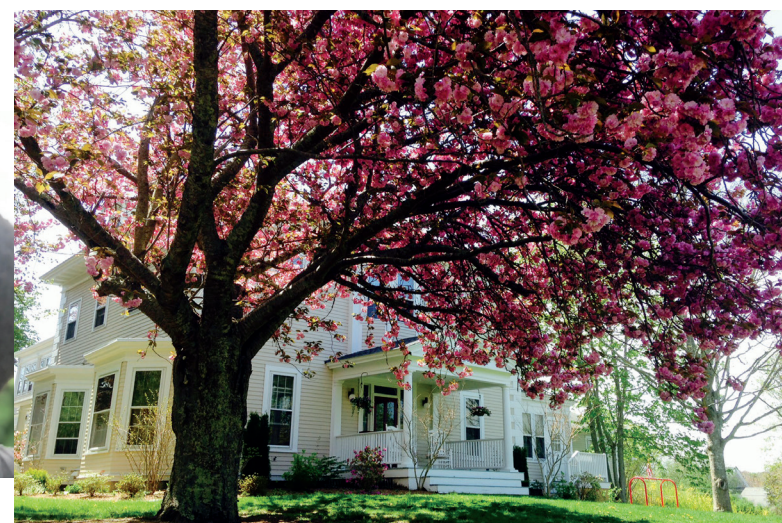
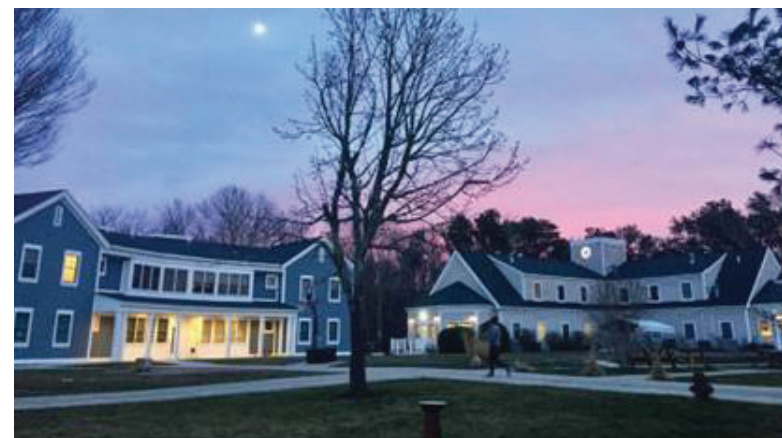
or (508) 896-5776 ext. 237

Admissions fax: (508) 896-8310

TTY and ASCII Users: (800) 720-3480

To view the *Children's Program Expertise brochure* or download our *Admission Application*, visit
<https://www.lathamcenters.org/what-we-do/latham-school/>

Latham Centers is an equal opportunity provider and employer.



LathamCenters
Passage to a brighter future

Latham Centers, Inc.
1646 Main St. (Route 6A)
Brewster, MA 02631

[LathamCenters.org](https://www.lathamcenters.org)

Programs and Services at Latham School

Special education and therapeutic supports since 1970

LathamCenters
Cape Cod, Massachusetts

Latham School is located on a beautiful four-acre campus in Brewster, Massachusetts, on scenic Cape Cod. Our campus includes a schoolhouse, dormitories, clinical and vocational building, historic sea captain's home with reception, dining room, nursing wing, classrooms, and offices. We're located close to parks, bayside beaches, the National Seashore, and other Cape Cod treasures.

Founded in 1970, Latham Centers creates brighter futures for individuals with complex special needs, helping children and adults achieve greater independence, self-worth, and happiness. Latham is internationally renowned for its expertise and success in working with individuals with Prader-Willi syndrome, a rare and life-threatening genetic disorder with no known cure.

Student Population

- ◆ Co-educational population
- ◆ Ages 8-22
- ◆ Developmentally delayed
- ◆ Prader-Willi Syndrome (PWS)
- ◆ Trauma
- ◆ Post-Traumatic Stress Disorder (PTSD)
- ◆ Reactive Attachment Disorder (RAD)
- ◆ Mood Disorder
- ◆ Bipolar Disorder
- ◆ Depression/Anxiety
- ◆ Behavioral & Emotional Dysregulation
- ◆ Oppositional Defiance
- ◆ Autism Spectrum Disorders



Clinical Supports

- ◆ Licensed and masters level clinicians
- ◆ Therapies:
 - Art Therapy
 - Attachment, Regulation and Competency (ARC)
 - Cognitive Behavioral Therapy
 - Collaborative Problem Solving
 - Modified Dialectical Behavior Therapy (DBT)
 - Play Therapy
- ◆ Weekly multidisciplinary team meetings
- ◆ Collaborative/interdepartmental approach to care
- ◆ Psychiatric consultations
- ◆ Positive Behavioral Supports (PBS) throughout all aspects of programming
- ◆ Sensory Integration/Supports throughout all aspects of programming



- ◆ Individualized Behavioral Support Plans
- ◆ Food security and individualized menu plans

Educational Programming

- ◆ Classroom ratio: 7:1:1
7 students: 1 Special Education Teacher: 1 Aide
- ◆ Individualized educational programming based on Massachusetts Curriculum Frameworks and student IEP
- ◆ Reading: iReady Program
- ◆ Math: Saxon Math and IXL Online Program
- ◆ Pre-Vocational and Vocational Training
- ◆ Transitional Programming
- ◆ Additional Education in Performing Arts, Physical Education, and Social/Life and Vocational Skills
- ◆ Additional Services in Speech/Language, OT, and PT
- ◆ PBS integration

Vocational Supports

- ◆ Job Skill Development: career exploration; resume and interview skill building; animal care (asinotherapy/donkey care; pet care; horse care); vocational Latham Works program (arts, crafts, woodworking, retail and office skill development.)

Residential Programming

- ◆ Dormitories on-campus and transitional residence
- ◆ Vocational programming
- ◆ Awake overnight staff
- ◆ ADL skill training
- ◆ Activity/leisure programming on campus and in the community
- ◆ Exercise programming
- ◆ Special Olympics
- ◆ PBS integration

Enriched Cape Cod Summer Programming

